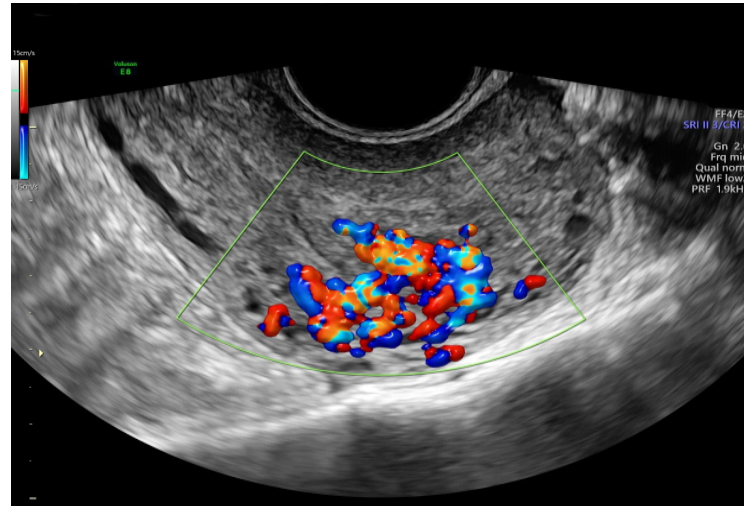
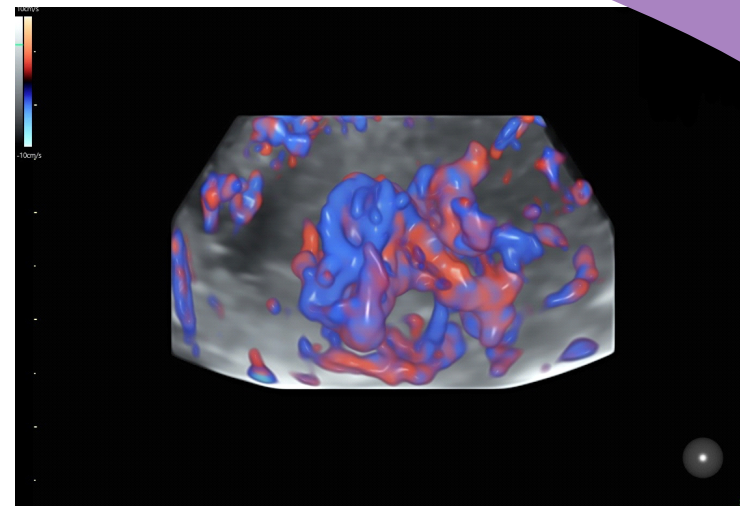


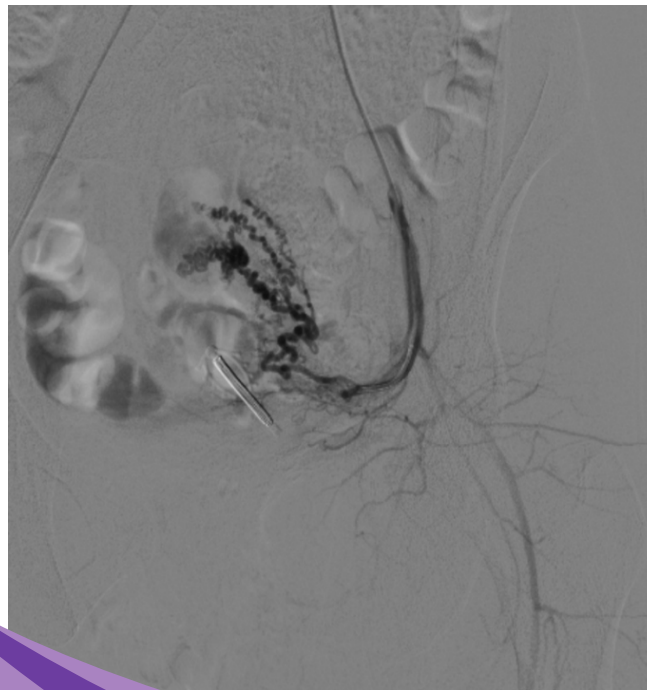
Interventional Procedures
Uterine artery embolisation to control bleeding



Before Embolisation



After Embolisation



Voluson
A HEALTHIER FUTURE
FOR WOMEN

Dr. Pallavi Dharmadhikari

M.D. DNB

**Fetal Medicine & Advanced
Sonography Center**

Your Health Partner
for Life...

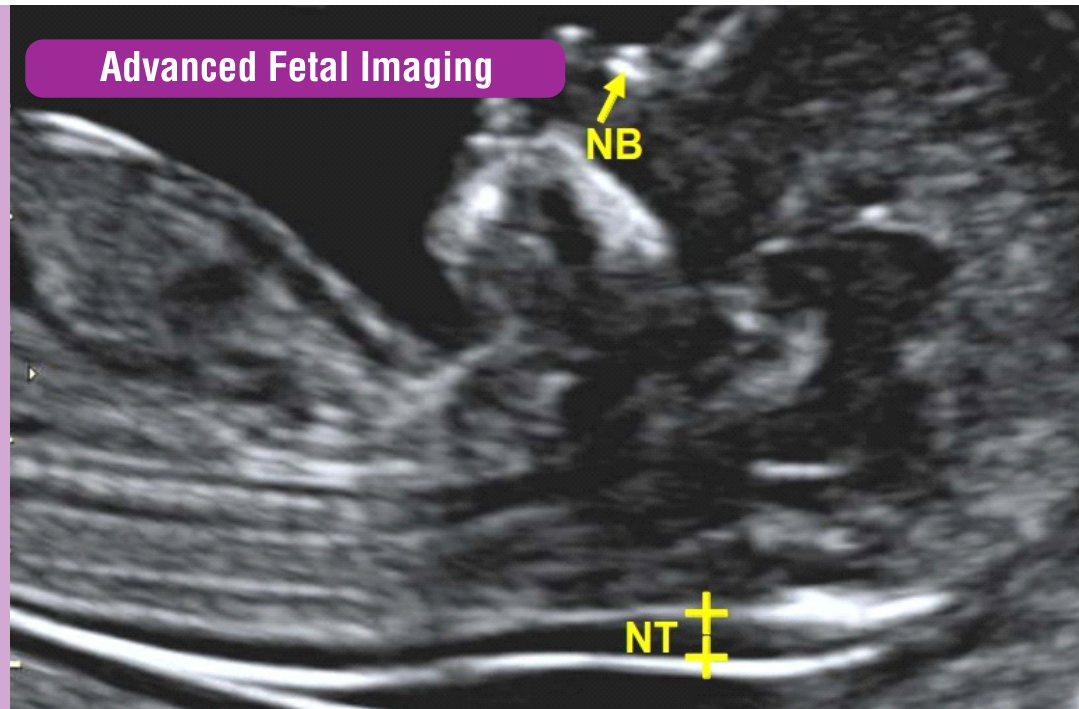


Near Kalidas Kala Mandir, Shalimar, Nashik
Ph.: 0253-2507001/02, Mob.: 9158887554

Focus of ultrasound examination has shifted from anomaly scan to first trimester scan. Many anomalies can be diagnosed in the first trimester 11-13w 6d scan which give choice of early termination to patient and enough time to fetal medicine specialist to investigate.

2nd trimester fetal anomaly scan 18-20 weeks

Advanced Fetal Imaging



NT/NB/DV/TR scan

Most important scan between 45 to 84 mm of CRL to look for chromosomal / genetic anomalies. Scan done at our center with FMF guidelines.

Still most important time to look for detail fetal anomalies. 3D ultrasound helps to diagnose and understand anomalies better. Fetal facial and limb anomalies can be well demonstrated.

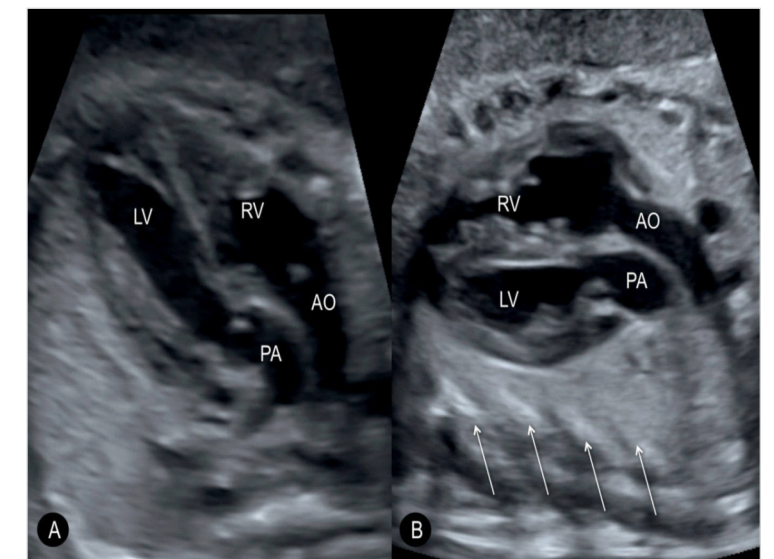
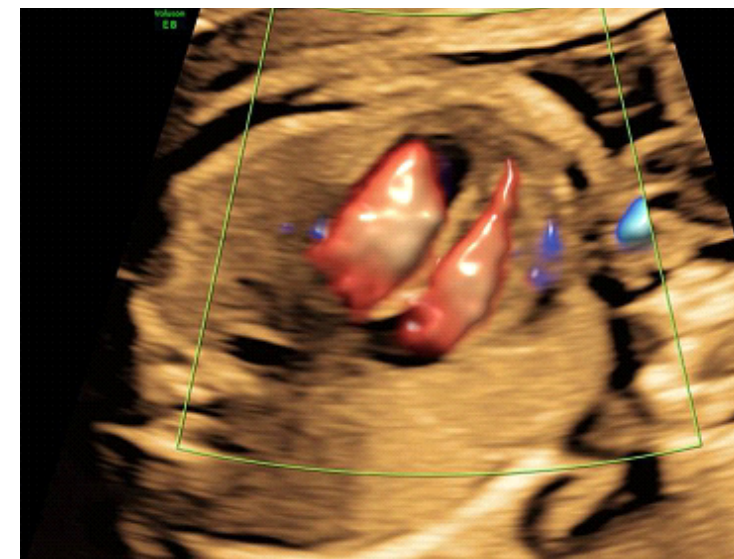
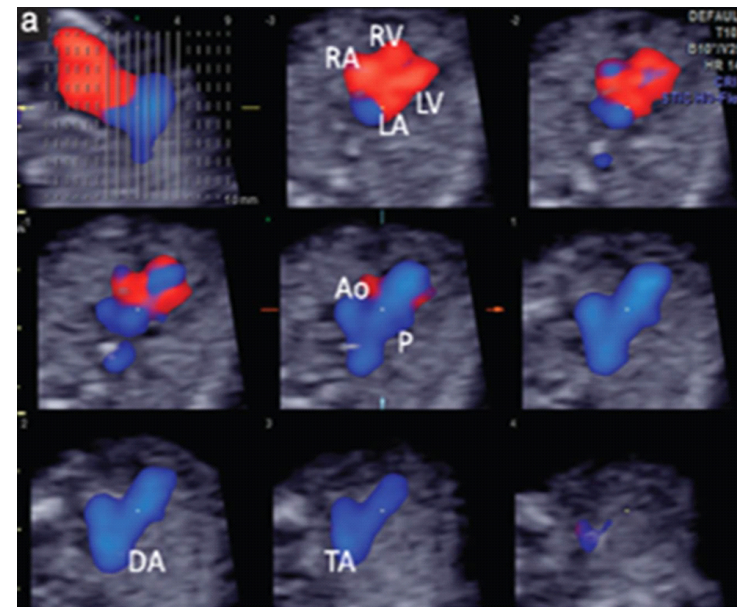
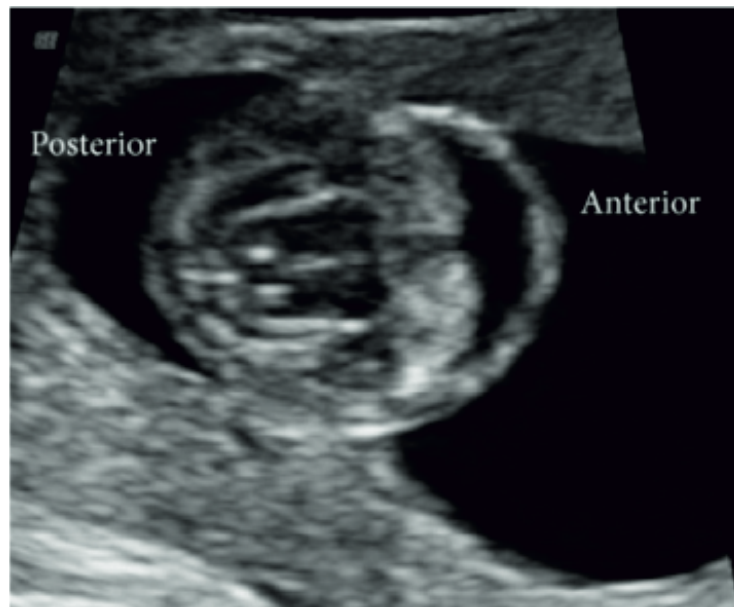


Diagnosis of major anomalies of CNS, CVS and other systems is possible in first trimester. e.g. Lobar holoprocencephaly

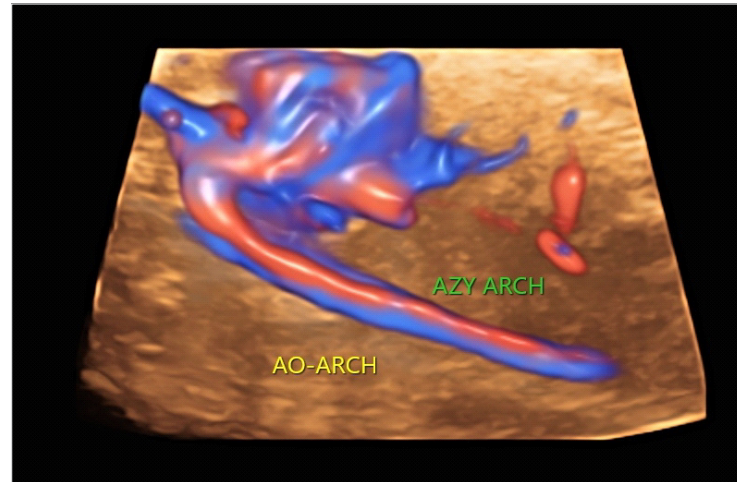
Early fetal echocardiography possible in first trimester 12-13 weeks. 3D greatly enhances ability to diagnose abnormalities of heart.

Fetal Echocardiography

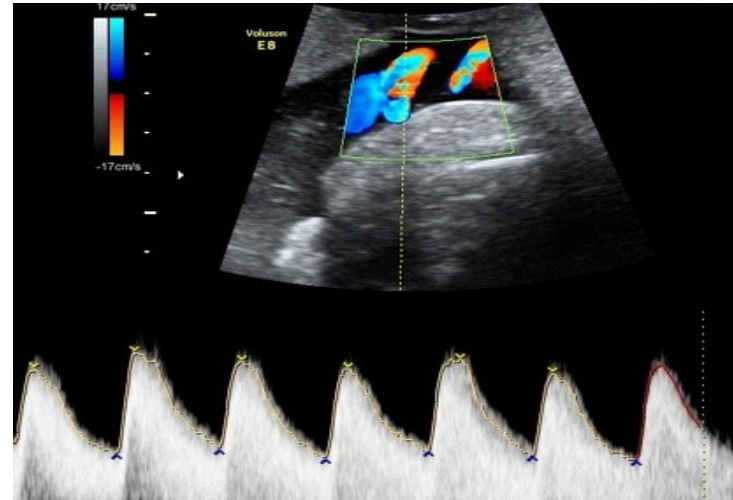
Fetal echocardiography to look for fetal heart, arterial and venous system including ducts venosus and aortic arch anomalies.



Azygous continuation of IVC

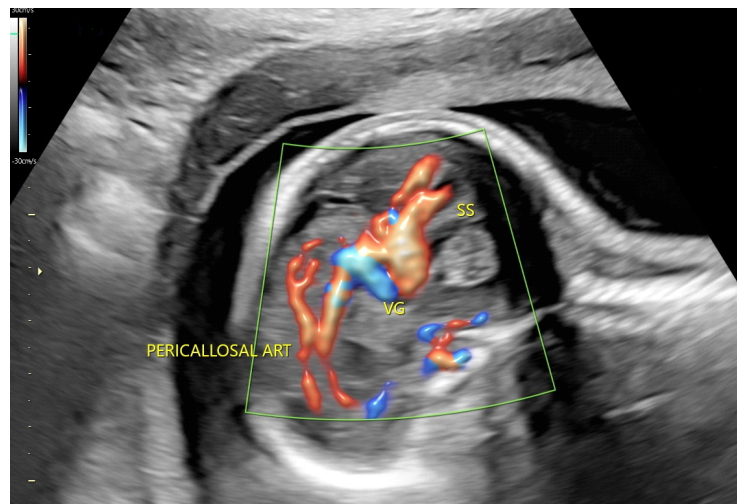


Understanding role of multi vessel Doppler study in diagnosis of early as well as late IUGR and reporting in Barcelona stage which helps further management.

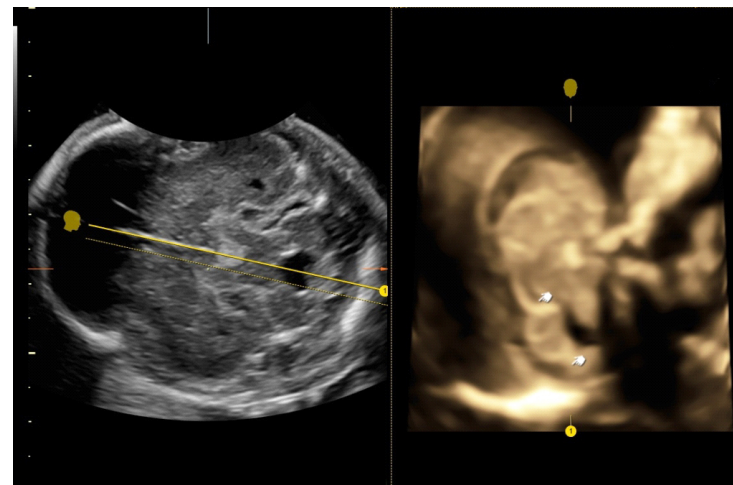


Neurosonography

Vein of Galen aneurysm



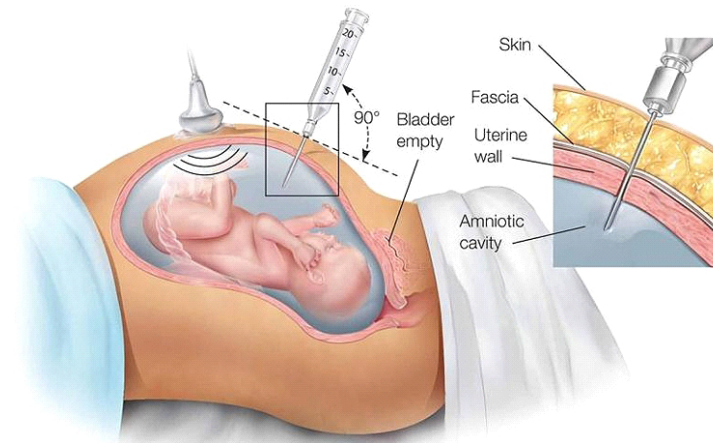
3D reconstruction for vermis and vermian angle when 2D evaluation is not possible.



Other Diagnostics Procedures

Evaluation of genetic abnormalities.

Non invasive testing like NIPT or invasive tests like amniocentesis are available at our center.



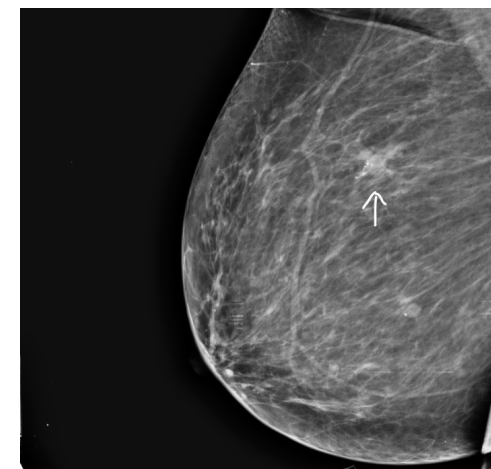
Other procedures like hysterosalpingography and IVP

HSG



Breast evaluation

Mammography to detect subcentimeter non palpable cancer

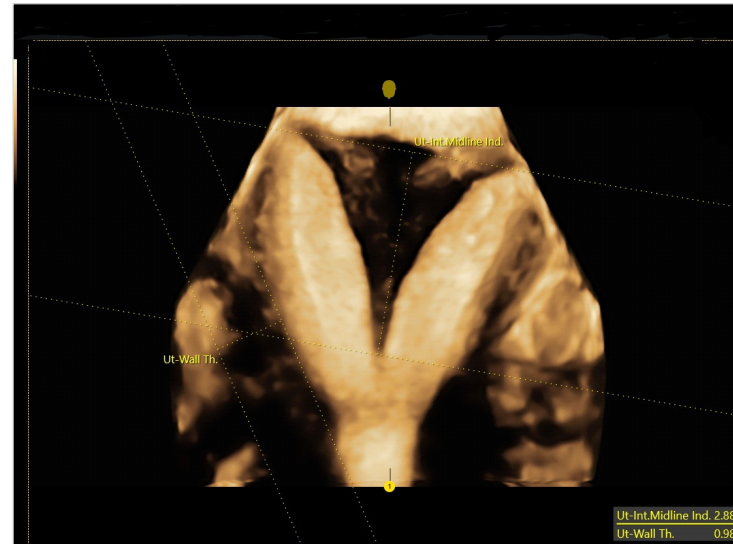
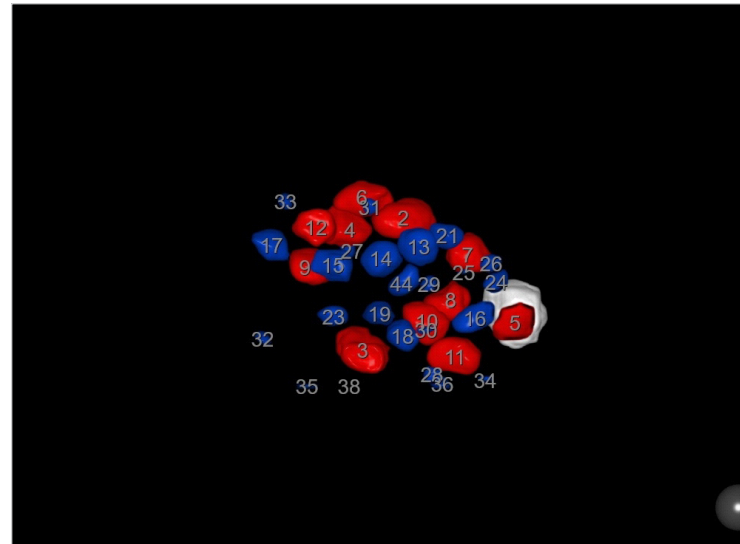
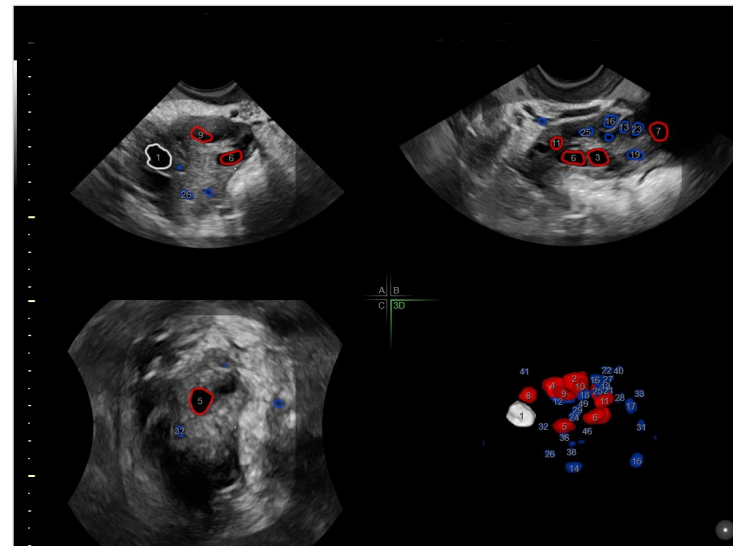
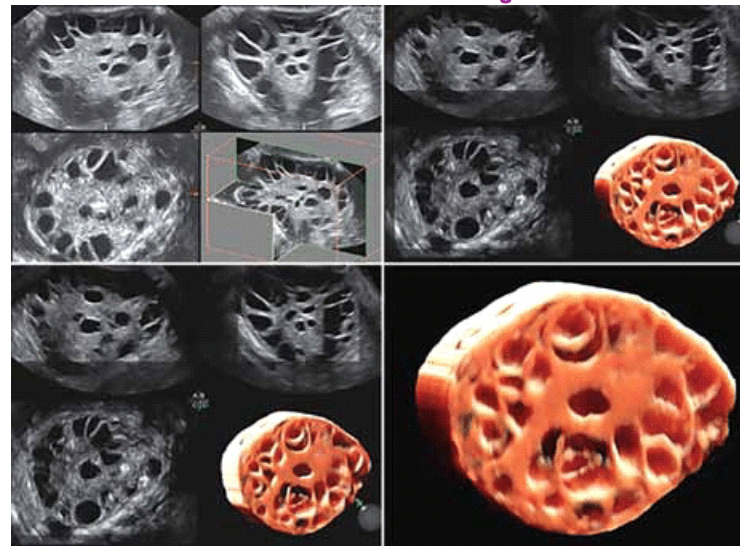


Cyst aspirations and biopsies of lesions

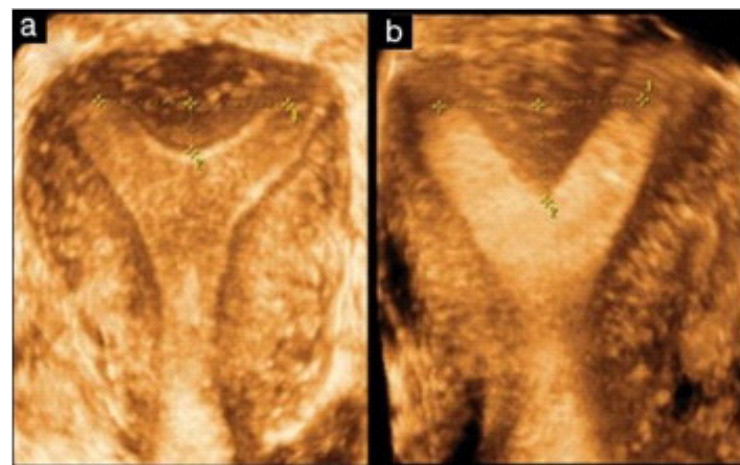


Role of 3D in infertility

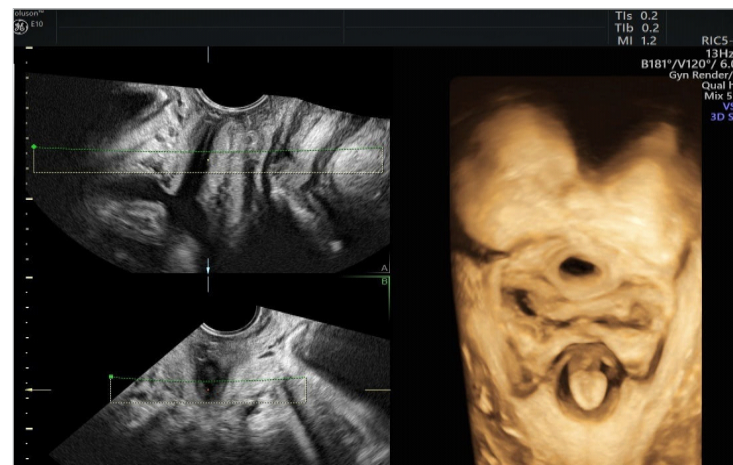
Assessing ovaries and PCO



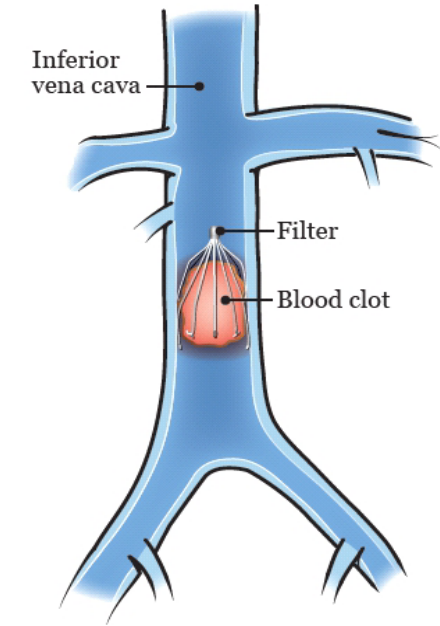
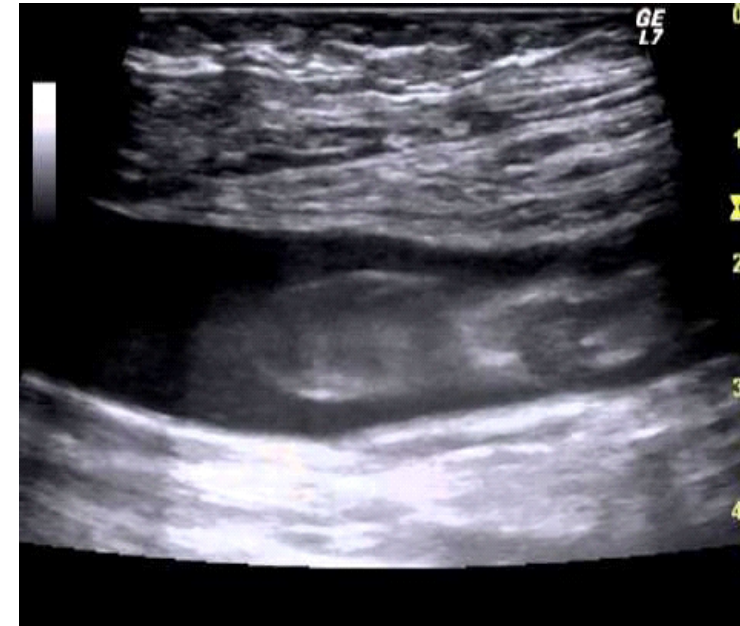
Coronal sections obtained on 3D to diagnose Mullerian duct anomalies



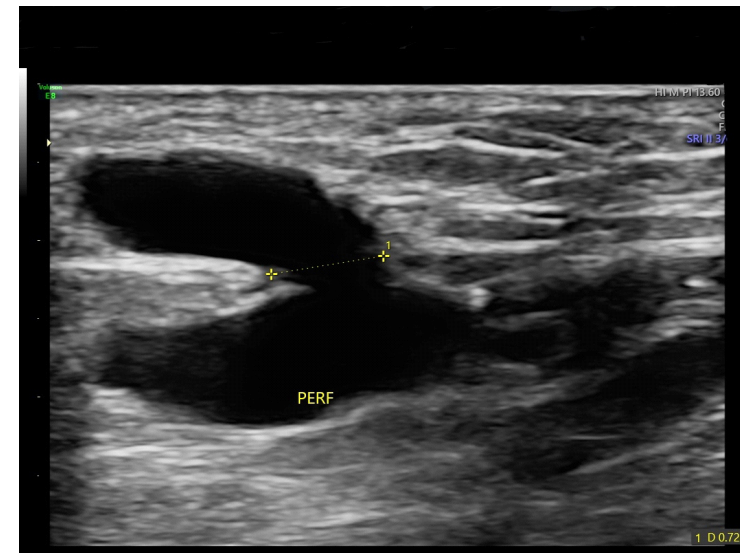
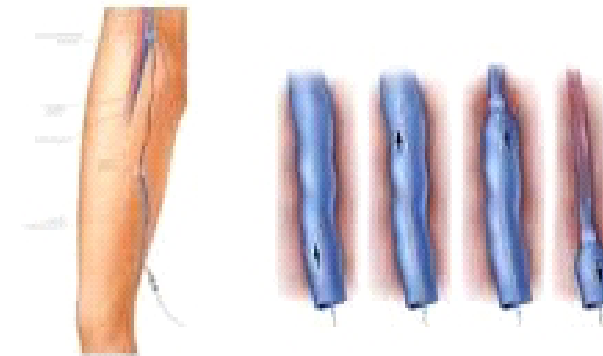
3D Ultrasound of perineum



Treatment of DVT and IVC filter placement to prevent pulmonary embolization



Endolaser - Ablation of varicose veins



Before ablation



After endolaser ablation thrombus forms in the perforator